

CAREER READY STANDARDS

THE CAREER-READY INDIVIDUAL...



Applies Appropriate
**ACADEMIC &
TECHNICAL SKILLS**

EDUCATION
AT WORK

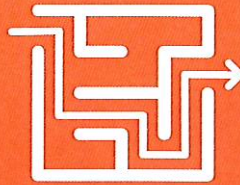
**Community Connections
for Career Opportunities**



COMMUNICATES
Effectively & Appropriately



Contributes to
**EMPLOYER &
COMMUNITY SUCCESS**



**MAKES SENSE
OF PROBLEMS**
& Perseveres in Solving Them



Uses
CRITICAL THINKING



Demonstrates
**INNOVATION
& CREATIVITY**



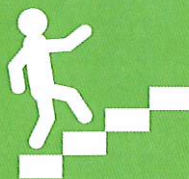
Models Ethical & Effective
**LEADERSHIP &
MANAGEMENT**



**WORKS PRODUCTIVELY
IN TEAMS**
& Shows Cultural Competency



Utilizes
TECHNOLOGY



Manages
**PERSONAL CAREER
DEVELOPMENT**



Attends to
**PERSONAL & FINANCIAL
WELL-BEING**

Based on the California State "Standards for Career Ready Practice," adapted from the CTE Model Curriculum Standards. Learn more at <https://careertech.org/career-ready-practices>.